

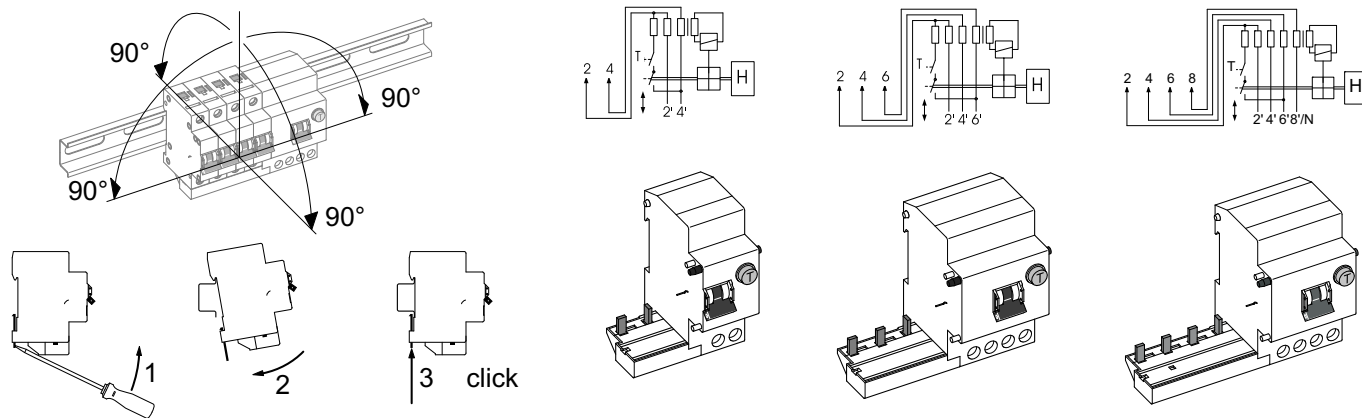
Instruction Leaflet
Montageanweisung
Notice d'installation
Instrucciones de montaje
Istruzioni per il montaggio
安装说明
Инструкция по монтажу
Montagehandleiding

Montagevejledning
Οδηγίες εγκατάστασης
Instruções de montagem
Monteringsanvisning
Asennusohje
Návod k montáži
Paigaldusjuhend
Szerelési utasítás

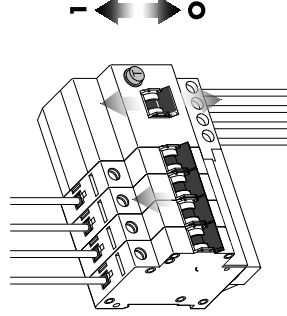
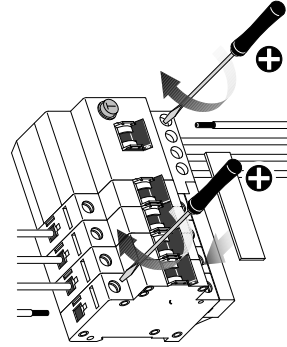
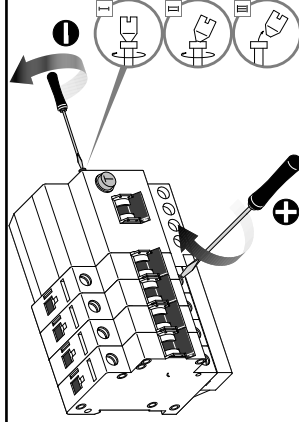
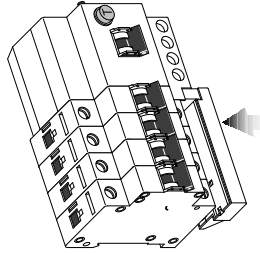
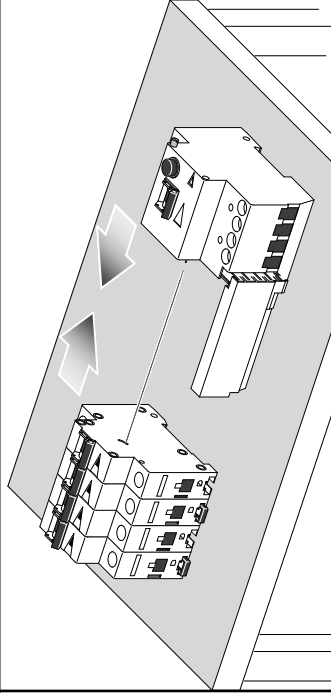
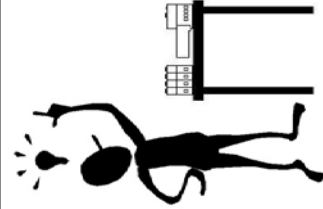
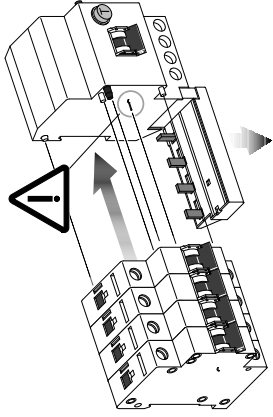
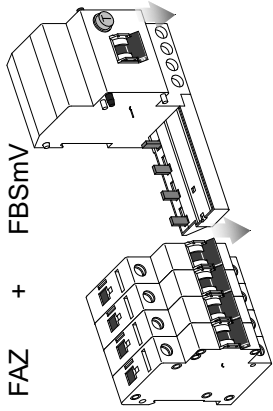
Montāžas instrukcija
Montavimo instrukcija
Instrukcja montażu
Navodila za montažo
Návod na montáž
Монтажни инструкции
Instrucțiuni de montaj
Upute za montažu

Kullanma Talimatı
Инструкция за монтаж
Intruksjonsblad
Монтажна інструкція
نشرة التعليمات

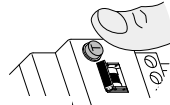
FBSmV



FAZ + FBSmV



Test



TEST



every 6 months

2-2,4Nm



Z2

0,6Nm



+

12mm



1-25mm²

